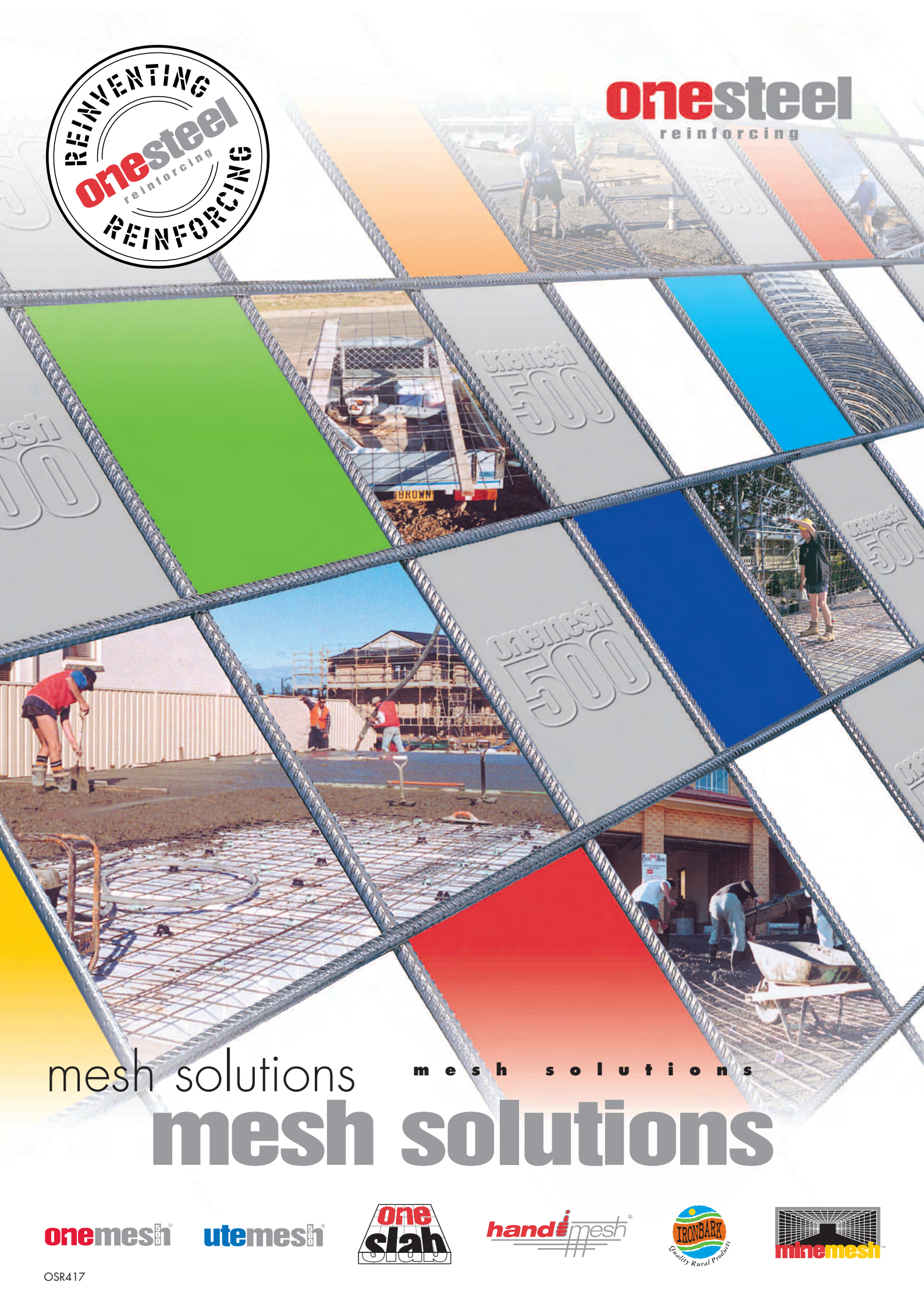




onesteel
reinforcing



mesh solutions

m e s h s o l u t i o n s

mesh solutions

onemesh

utemesh



handimesh



mesh solutions

OneSteel Reinforcing is dedicated to Reinventing Reinforcing and finding new and better ways to improve the efficiency and cost-effectiveness of all types of reinforced concrete construction.

Our Mesh Solutions provide customers with genuine opportunities to save time, money and effort on their next reinforced concrete project.

- ***National Branch & Extensive Reseller Network***
- ***'One-Stop-Shops' for Reo, Mesh & Accessories***
- ***Local Service, Pick-Ups & Deliveries***



OneSteel Reinforcing operates world-class manufacturing & processing facilities throughout Australia.

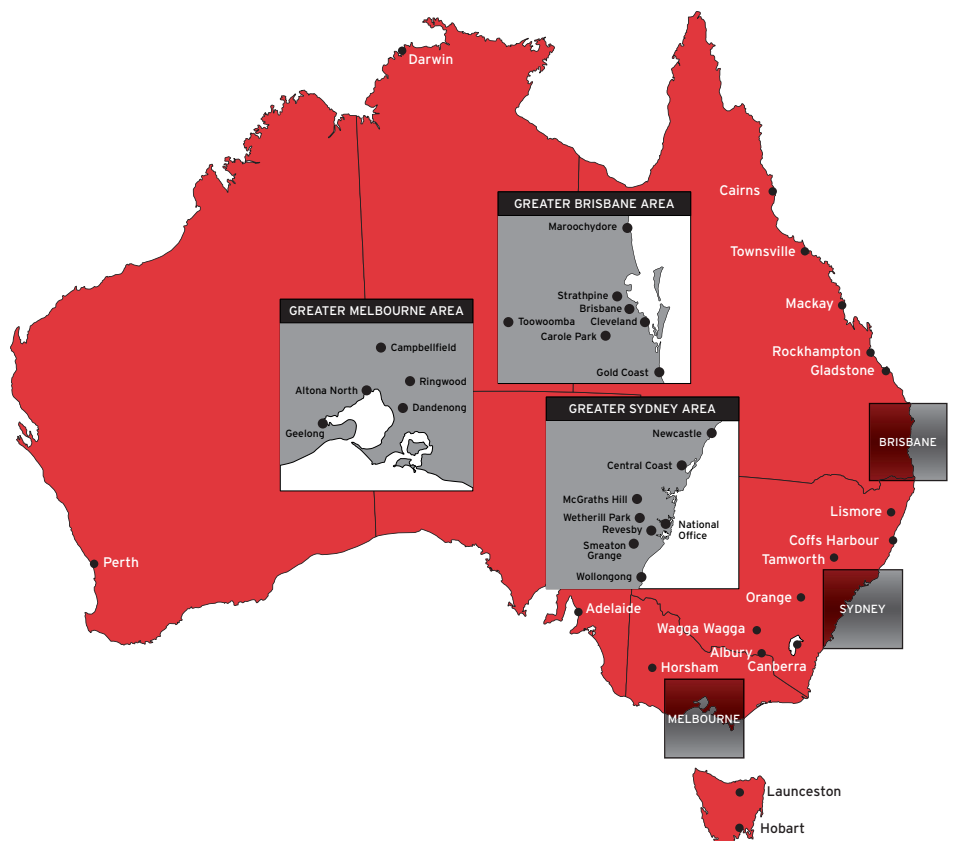
We produce a comprehensive range of quality-guaranteed products from Australian steel, and comply with all Australian Standards.

Purpose-designed Mesh Solutions are available for Building and Construction, Industrial, Mining and Rural applications.

Where required, our experienced Engineers can add substantial value by identifying opportunities for improvement and potential for savings during the design phase of any project.

An extensive network of branches and approved resellers offer flexible distribution and delivery, ensuring our Mesh Solutions are readily available throughout Australia.

OneSteel Reinforcing national branch network



onemesh

ONEMESH500

- **'one' rolled into every sheet:**
Your OneSteel assurance of quality
- **Square (S), Rectangular (R) & Trench Mesh (TM)**
- **Yield Strength: Min. characteristic value 500 MPa**
- **Uniform Elongation (Agt):**
Minimum characteristic value 1.5%
- **Ratio of Tensile to Yield Strength:**
Minimum characteristic value 1.03
- **All OneSteel Reinforcing REOMESH products are ACRS quality-certified***
- **Complies with AS4671 Reinforcing Materials, AS2870 Residential Slabs and Footings & AS3600 Concrete Structures**



ONEMESH500

concrete
reinforcing
mesh

ONEMESH500 is a multi-purpose steel reinforcing mesh suitable for use in general concrete pavement applications, residential raft slabs and footings to AS2780 and most structural applications to AS3600 and AS2327.1.

Its minimum Yield Strength of 500MPa is the same as 500PLUS Rebar, simplifying designs that historically had a mixture of 400, 450 and 500 MPa reinforcing steels.

The Uniform Elongation (Agt) of 1.5% reflects the Low Ductility Class L classification in AS4671.

It also satisfies the current requirements of AS2870, Amendment 2 1999 & Amendment 3 2002, which call for a minimum Agt value of 1.5% in all 500 grade meshes used in residential slabs in Australia.



* OneSteel Reinforcing REBAR & REOMESH is certified by ACRS, the Australian Certification Authority for Reinforcing Steels.

onemesh onesteel

ONEMESH500

Class L mesh to AS4671 is designated by wire shape, wire yield (proof) strength, mesh configuration, wire size & wire spacing (pitch).

For example, *D500SL92* is a Square (S), Class L (L) mesh (500 MPa) with deformed (D) wire, with a nominal diameter of 9 mm (actual 8.6 mm), spaced at a pitch of 200 mm.

ONEMESH500 specifications

Wire Diameters

These are specified on the basis of being able to demonstrate Agt compliance with a minimum specified cross-sectional area.

Lapping of Fabric Sheets

Lap splicing of welded fabric is covered by Section 13.2.4 of AS3600.

It states that a lapped splice for welded wire fabric in tension shall be made so that the two outermost transverse wires of one sheet of fabric overlap the two outermost transverse wires of the sheet being lapped.

Overlap of ends of sheets (with overhang)



Overlap of side of sheets



Overlap of side and end of sheets



onemesh eeh

	Mesh Specification				Approx mass of 2.4m x 6m sheets		Cross-sectional area	
Product Code	Longitudinal Wires		Cross Wires				Longitudinal Wires mm²/m	Cross Wires mm²/m
	No	X Size @ Pitch mm	No	X Size @ Pitch mm	Area kg/m²	Sheet kg		
	Rectangular Meshes (RL)							
RL1218	25	X 11.90 @ 100	30	X 7.60 @ 200	10.5	157	1112	227
RL1118*	25	X 10.70 @ 100	30	X 7.60 @ 200	8.8	130	899	227
RL1018	25	X 9.50 @ 100	30	X 7.60 @ 200	7.3	109	709	227
RL918*	25	X 8.60 @ 100	30	X 7.60 @ 200	6.3	93	581	227
RL818	25	X 7.60 @ 100	30	X 7.60 @ 200	5.3	79	454	227
RL718*	25	X 6.75 @ 100	30	X 7.60 @ 200	4.6	67	358	227
	Square Meshes (SL) with edge lapping wires							
SL102	10	X 9.50 @ 200 +4 X 6.75 @ 100	30	X 9.50 @ 200	5.6	80	354	354
SL92	10	X 8.60 @ 200 +4 X 6.00 @ 100	30	X 8.60 @ 200	4.6	66	290	290
SL82	10	X 7.60 @ 200 +4 X 5.37 @ 100	30	X 7.60 @ 200	3.6	52	227	227
SL72	10	X 6.75 @ 200 +4 X 4.77 @ 100	30	X 6.75 @ 200	2.8	41	179	179
SL62	10	X 6.00 @ 200 +4 X 4.24 @ 100	30	X 6.00 @ 200	2.2	33	141	141
SL52*	10	X 4.77 @ 200 +4 X 4.00 @ 100	30	X 4.77 @ 200	1.4	20	89	89
SL63 WA only	6	X 6.00 @ 300 +4 X 4.00 @ 100	30	X 6.00 @ 300	1.5 (2.3m sheet width)	21	94	94
SL53 WA only	6	X 4.77 @ 300 +4 X 4.00 @ 100	20	X 4.77 @ 300	1.0 (2.3m sheet width)	15	60	60
	Square Meshes (SL)							
SL81	25	X 7.60 @ 100	60	X 7.60 @ 100	7.1	105	454	454
	Trench Meshes (TM) strip widths 200mm, 300mm, 400mm							
L12TM	3,4 or 5 X 11.90 @ 100				4.77 @ 300			
L11TM	3,4 or 5 X 10.70 @ 100				4.77 @ 300			
L8TM	3,4 or 5 X 7.60 @ 100				4.77 @ 300			

* Available on request.

F & RF meshes to AS1304 have been replaced by SL & RL meshes to AS4671.

UTEMESH500

- ***Versatile***
- ***Lightweight***
- ***Minimises wastage***
- ***Can be handled by one person***
- ***Safe and legal to transport***
- ***Easy to set-up, place and tie***
- ***Full range of accessories***
- ***Ideal for driveways and smaller concreting jobs***

UTEMESH500
mesh solutions

Product Code	Std Unit	Longitudinal Wires	Cross Wires mm	Weight Kg
SL62UTE	Sheet 4mx2m	11 x 6.00 @ 200	20 x 6.00 @ 200	18
SL72UTE	Sheet 4mx2m	11 x 6.75 @ 200	20 x 6.75 @ 200	23



So that builders can legally transport mesh on the back of a ute or other small truck, we introduced UTEMESH500 in compact 4x2m sheets. This makes it a lot easier to handle and legal to transport than standard mesh (6x2.4m).

Weighing as little as 18kg, one person can comfortably lift UTEMESH500 on and off their vehicle and place and tie the steel, eliminating the need for an extra pair of hands during set-up.

Our UTEMESH500 Solution can include ties, bar chairs, plastic sheeting and dowels or key joints that may be required for concreting.

utemesh⁵⁰⁰





ONESLAB house

- **Fixed \$/m² package**
- **No hidden extras**
- **Better control of costs**
- **Lower overall cost**
- **Fast set-up and placement**
- **Stronger and more rigid**
- **No substantial site works**
- **Access to leading design technology and soil testing**
- **ONEMESH500 mesh to AS4671**



The use of polystyrene pods in house slabs is popular in most parts of Australia.

The pods work as voids to reduce the amount of concrete needed, and create a strong, rigid network of interlocking reinforced concrete beams and slab.

To make life easy for builders, in selected areas OneSteel Reinforcing now offers a complete ONESLAB Package for a fixed \$/m².

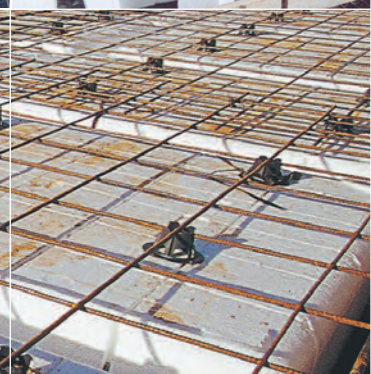
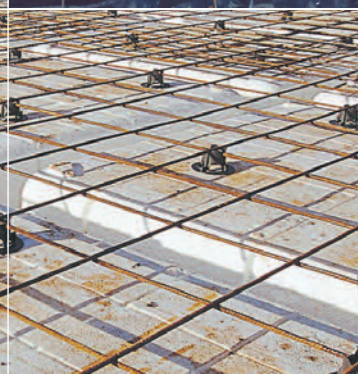
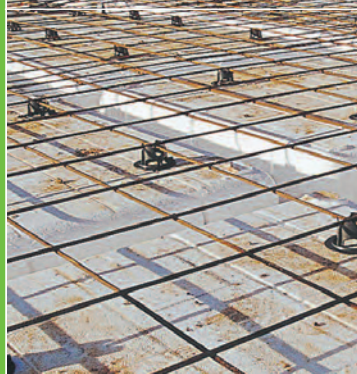
The package includes delivery of plastic sheeting, polystyrene pods and spacers, and the necessary reinforcing bars, mesh and accessories, like tie wire and bar chairs.

We even arrange for waste polystyrene to be recycled at the end of the job!

ONESLAB Packages are available to suit different site classifications: (eg; H:300mm, M:225mm & S:175mm thick pods).

onemesh⁵⁰⁰

waffle slab mesh solutions



ing packages



- **Fixed \$/m² package**
- **Slab and footings solutions for all types of sites**
- **Minimise waste**
- **Simplify placement of reo**
- **Reduce on-site labour**
- **Faster construction**
- **Accurate cost \$/m²**



slab-on-ground
mesh solutions



medium-density
mesh solutions

Slab-On-Ground

Where a conventional slab-on-ground is desired, we can also offer a **ONESLAB** package for all materials needed to set up and reinforce the slab.

Trench Mesh & Footing Cages

Trench mesh and accessories are an efficient way to reinforce footings in residential construction. For sites with difficult ground conditions, OneSteel Reinforcing can also prefabricate a variety of footing cages using a combination of mesh, rebar and ribbed wire.

Special Run & Engineered Mesh

For multi-storey residential projects with a high volume of repetition in the floorplan, we can provide Special Run and/or Engineered Mesh Solutions to reduce floor cycles, steelfixing time, waste, and speed construction.

onemesi 500

special run mesh

- ***Reduces costs by up to 10%***
- ***Minimises waste***
- ***Faster floor cycles***
- ***Reduces on-site labour***
- ***Simplifies placement of reo***
- ***Improves speed of construction***
- ***Reduces congestion at lap points***
- ***Wide range of jointing systems for all types of construction applications***



The construction of industrial floors, such as those found in warehouses, workshops, factories and transport depots, presents excellent opportunities for material cost savings of up to 10% with Special Run Mesh Solutions.

The large, regular areas in industrial floors make it possible for substantial benefits to be obtained by utilising special run-to-length and/or width mesh instead of standard mesh or rebar.

The mesh can be made to fit construction joints with the minimum of wastage, reducing on-site labour and speeding construction.

With a wide range of dowels, dowel cradles and keyjoints, we can also supply the most appropriate jointing system for the application. Where increased abrasion or impact resistance is required, we can supply composite steel fibre/mesh solutions.

special run mesh solutions



onemesh

engineered mesh

- ***Reduces cost***
- ***Minimises waste***
- ***Faster floor cycles***
- ***Reduces on-site labour***
- ***Simplifies placement of reo***
- ***Improves speed of construction***
- ***Closely matches engineering intent***
- ***Prefabrication work completed under factory conditions***

engineered mesh solutions

We offer engineered mesh solutions for commercial developments such as offices, public buildings, retail and hospitality facilities.

Where a structure has already been detailed for conventional reinforcing, we can re-engineer it to suit the use of engineered mesh. Because it is a custom-designed, project-specific solution, engineered mesh can very closely match engineering intent.

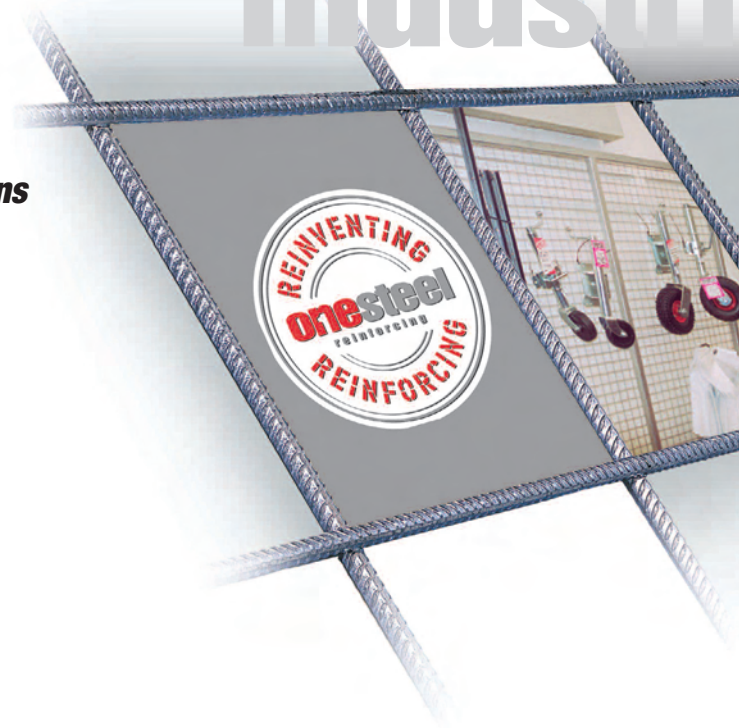
As well as reducing waste, it significantly reduces on-site steelfixing and associated costs, while speeding construction and floor cycles.

Cut & Bent Mesh & Prefab

Cut & Bent Mesh is widely used for civil and building applications and by precast concrete manufacturers. We also prefabricate most types of reinforcing assemblies to reduce set-up times and increase productivity.

onemesi 500

- **Safety screens, guarding and security applications**
- **Handrails, barriers, fencing and gates**
- **Covering slab penetrations**
- **Shelving and storage racks**



HANDIMESH solutions



OneSteel Reinforcing's range of HANDIMESH® sheets and rolls are handy for just about any steel mesh application you can think of.

Need somewhere to store that valued wine collection? Looking to increase your shelving and storage capacity? Need safety guards, or concerned about security?

You'll find HANDIMESH handy for 100s of jobs.

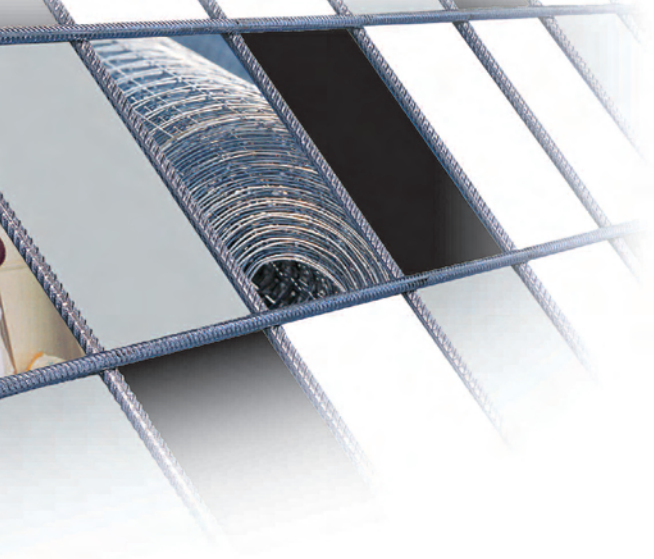


HANDIMESH Sheets

Product Code	Length m	Height m	Line Wire mm	Cross Wire mm	Weight Kg
G112A	3.000	2.400	2.50@25	2.50@25	23
G112AHS	2.000	1.200	2.30@25	2.30@25	8
G122AHS	2.000	1.200	2.30@25	2.30@50	6
G113	3.000	2.400	3.15@25	3.15@25	36
G123	3.000	2.400	3.15@25	3.15@50	27
G224	3.000	2.400	4.0@50	4.0@50	29
G224HS	2.000	1.200	3.50@50	3.50@50	10
G225	3.000	2.400	5.0@50	5.0@50	45.3
G234	3.000	2.400	4.0@50	4.0@75	24
G234HS	2.000	1.200	3.50@50	3.50@75	8
G235	3.000	2.400	5.0@50	5.0@75	38
G445A	3.000	2.400	5.6@100	5.6@100	29
G444HS	2.000	1.200	4.0@100	4.0@100	5
*B224	3.000	2.400	4.0@50	4.0@50	29
*B234	3.000	2.400	4.0@50	4.0@75	24
*B235	3.000	2.400	5.0@50	5.0@75	38
*B445A	3.000	2.400	5.6@100	5.6@100	29

*Made from Black wire

al mesh



- **Bins, containers and trolleys**
- **Point-of-sale display stands**
- **Home handyman applications**

HANDIMESH Rolls

Product Code	Length m	Height m	Line Wire mm	Cross Wire mm	Weight Kg
G232A9	30.000	0.900	2.50@50	2.5@75	36
G232A12	30.000	1.200	2.5@50	2.5@75	48
G232A18	30.000	1.800	2.5@50	2.5@75	71
G442A12	30.000	1.200	2.5@100	2.5@100	29
G442A18	30.000	1.800	2.5@100	2.5@100	42



Our versatile range of HANDIMESH will help solve your problems ... the only limit is your imagination.

If our extensive range of standard products does not meet your requirements, don't worry, we can help you find the most cost-effective solution to any steel mesh requirement.

handimesh[®]

rural mesh

- **Top Quality Stockyard Mesh Fencing to suit sheep, pig, goat, cattle and larger stock**
- **Rural Meshes**
- **Fencing and Gates**
- **Stockyards**



IRONBARK mesh solutions



IRONBARK

IRONBARK is a range of mesh products specifically developed for rural applications including stockyard, gates and infill panels, rolls of wire, and accessories.

Offering an outstanding combination of versatility, durability and quality, IRONBARK mesh solutions are 100% fire-proof and rot-proof.



Stockyard Mesh Sheet for sheep, pig and goat yard

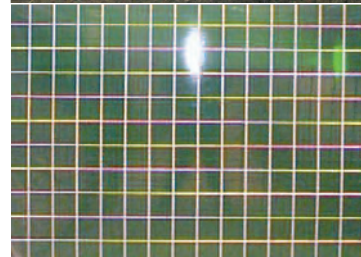
Product Code	Wire Type	Length m	Height m	Horizontal Spacing	Vertical Spacing	Wire Dia mm	Mass kg
STGLU109	Galv	6	0.9	6x100/ 2x150	250	5.0 Horz.	11
STG5109	Galv	6	0.9	100	250	5.0	13
STG51011	Galv	6	1.1	100	250	5.0	15
STB569	Bright	6	0.9	100	150	5.0	15
STB5611	Bright	6	1.1	100	150	5.0	18
STG569	Galv	6	0.9	100	150	5.0	15
STG5611	Galv	6	1.1	100	150	5.0	18

Stockyard Mesh Roll for sheep, pig and goat yard

Product Code	Wire Type	Length m	Height m	Horizontal Spacing	Vertical Spacing	Wire Dia mm	Mass kg
STG5109R	Galv	30	0.9	100	250	5.0	63
STG51011R	Galv	30	1.1	100	250	5.0	76
STB569R	Bright	30	0.9	100	150	5.0	73
STG569R	Galv	30	0.9	100	150	5.0	75
STB5611R	Bright	30	1.1	100	150	5.0	88
STG5615R	Galv	60	1.5	150	150	5.0	194.5
STG5611R	Galv	30	1.1	100	150	5.0	90

Stockyard Mesh for larger stock

Product Code	Wire Type	Length m	Height m	Horizontal Spacing	Vertical Spacing	Wire Dia mm	Mass kg
STHG8812	HD Galv	6	1.2	100	200	8.0	45
STB8812	Bright	6	1.2	100	200	8.0	45
STB8814	Bright	6	1.4	100	200	8.0	51
STG5615	Galv	6	1.5	150	150	5.0	24



mining mesh

- **Strata Control Solutions**
- **Ground Support Solutions**
- **Coal & Metalliferous Applications**
- **Quality Australian Made MINEMESH™**
- **Extensive Applications Experience**
- **National Technical Support & Back-up**
- **Australia-Wide Service Network**
- **Specialist Authorised Suppliers**

MINEMESH mesh solutions

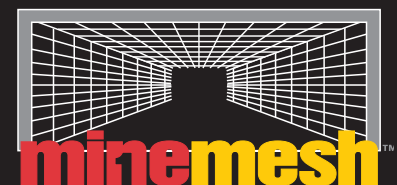


MINEMESH

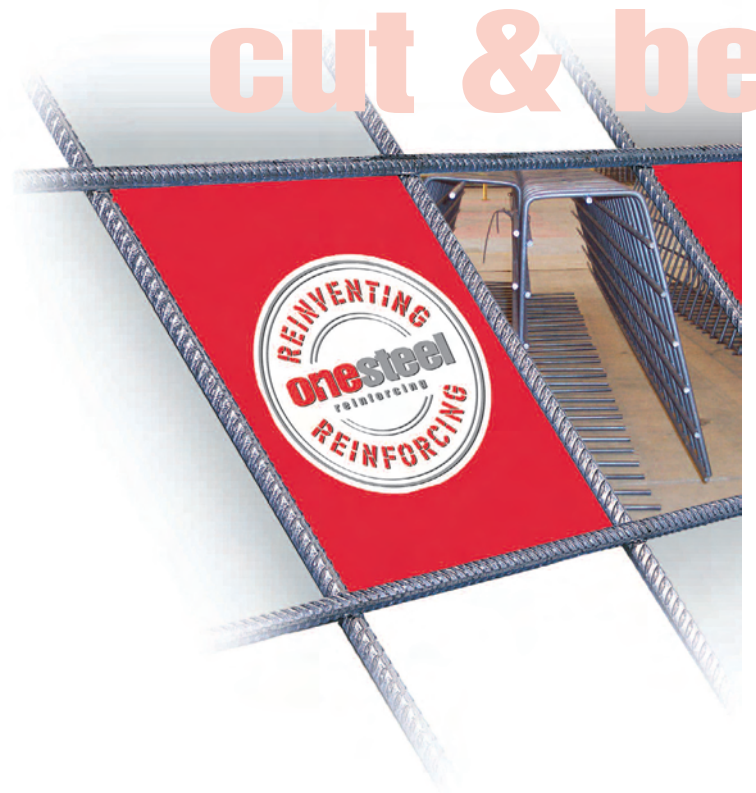
OneSteel Reinforcing provides Strata Control and Ground Support Mesh Solutions for coal and metalliferous mining applications including standard rib & roof mesh, specially-designed rib & roof modules, and goaf modules for longwall changeover.

MINEMESH™ Service Network

- **Townsville**
- **Mackay**
- **Rockhampton**
- **Newcastle**
- **Wollongong**
- **Orange**
- **Horsham**
- **Launceston**
- **Adelaide**
- **Perth**



Separate product brochures are available for **IRONBARK** and **MINEMESH**

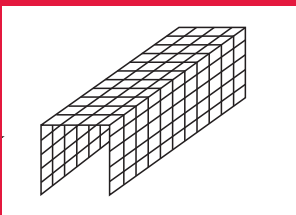


CUT & BENT MESH

mesh solutions

We can Cut and Bend mesh to meet just about any requirements and offer fast, reliable turnaround, with lead times of less than 3 days for most work. The Cut and Bent Mesh can then be delivered to site to suit your work schedule, or picked up from your nearest OneSteel Reinforcing Branch.

Ask your Branch for details of how we can save you time, effort and money on your next project.

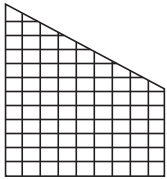


onemesh



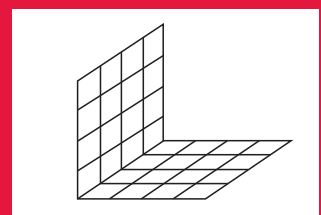
ent mesh

- **Precast Concrete**
- **Various Types of Footings**
- **Safety Screens**
- **Shelving and Displays**
- **Pipe Encasement**
- **Mining Applications**



A large Cut & Bent Mesh project for OneSteel Reinforcing involved prefabricating special sheets of mesh and bending them to suit the required profile for Concrete Edge Barriers on the M7 Motorway in Sydney.

Several thousand Cut & Bent Barrier Mesh panels were supplied to the project, enabling the builder, Abigroup and Leighton Contractors (ALJV), to reduce manpower for this aspect of the project from 40 to just 4! Not only did the use of Cut & Bent Mesh provide huge labour savings on site, it simplified and boosted the speed of construction and improved OH&S.



onemesi

ACT

Canberra OneSteel Reinforcing
17 Sheppard Street Hume ACT 2620
Phone: 02 6260 1244 Fax: 02 6260 1286

New South Wales

Albury OneSteel Reinforcing
327 Kiewa Street, Albury NSW 2640
Phone: 02 6021 1466 Fax: 02 6041 1594

Central Coast OneSteel Reinforcing
Cnr Gavenlock Rd & Marklea Close,
Tuggerah NSW 2259
Phone: 02 4351 1077 Fax: 02 4351 1075

Coffs Harbour OneSteel Reinforcing
c/- OneSteel Metaland
Cnr Elswick & Isles Drive, Coffs Harbour NSW 2450
Phone: 02 6652 3744 Fax: 02 6652 4226

Lismore OneSteel Reinforcing c/- OneSteel Metaland
39-41 Habib Drive, Lismore South NSW 2480
Phone: 02 6621 8722 Fax: 02 6621 8497

McGraths Hill OneSteel Reinforcing
38 Park Road, McGraths Hill NSW 2756
Phone: 02 4587 9679 Fax: 02 4587 9122

Newcastle OneSteel Reinforcing
15 Statham Street, Bennetts Green NSW 2290
Phone: 02 4948 7433 Fax: 02 4947 2084

Orange OneSteel Reinforcing
5 Stephens Place, Orange NSW 2800
Phone: 02 6362 2299 Fax: 02 6362 4994

Port Macquarie OneSteel Reinforcing
10 Belah Road, Port Macquarie NSW 2444
Phone: 02 6581 1144 Fax: 02 6581 1181

Revesby OneSteel Reinforcing Service Centre
Gate 3 Mons Road, Revesby NSW 2212
Phone: 02 9792 9062 Fax: 02 9792 1971

Smeaton Grange OneSteel Reinforcing
2-4 Bluffett Drive, Smeaton Grange NSW 2567
Phone: 02 4648 1691 Fax: 02 4648 1311

Tamworth OneSteel Reinforcing c/- OneSteel Metaland
26-30 Goonan Street, West Tamworth NSW 2340
Phone: 02 6765 4044 Fax: 02 6765 2552

Wagga Wagga OneSteel Reinforcing
Cnr Say & Schiller Streets, Wagga Wagga NSW 2650
Phone: 02 6921 4178 Fax: 02 6921 7069

Wetherill Park OneSteel Reinforcing
14 Walker Place, Wetherill Park NSW 2164
Phone: 02 9725 1799 Fax: 02 9756 1168

Wollongong OneSteel Reinforcing
14-16 Lady Penrhyn Drive, Unanderra NSW 2526
Phone: 02 4272 9889 Fax: 02 4271 8718

Northern Territory

Darwin OneSteel Reinforcing
Lot 1611 Bombing Road, Winnellie NT 0820
Phone: 08 8947 0330 Fax: 08 8947 0358

Queensland

Brisbane OneSteel Reinforcing
220 Bradman Street, Acacia Ridge QLD 4110
Phone: 07 3845 5655 Fax: 07 3845 5697

Cairns OneSteel Reinforcing
Lot 25 Hargreaves Street, South Cairns
Industrial Estate, Edmonton QLD 4869
Phone: 07 4045 5955 Fax: 07 4045 5922

Carole Park OneSteel Reinforcing
23-25 Argon Street, Carole Park QLD 4300
Phone: 07 3271 2099 Fax: 07 3271 2950

Cleveland OneSteel Reinforcing
Lot 11 Freeth Street, Cleveland QLD 4163
Phone: 07 3821 3222 Fax: 07 3821 3233

Gladstone OneSteel Reinforcing
c/- OneSteel Metaland
Bensted Street, Gladstone QLD 4680
Phone: 07 4972 8033 Fax: 07 4972 8066

Gold Coast OneSteel Reinforcing
Cnr Precision Drive & Barnett Place,
Ernest QLD 4214
Phone: 07 5594 0599 Fax: 07 5594 0495

Mackay OneSteel Reinforcing
7 David Muir Street, Slade Point QLD 4740
Phone: 07 4955 1922 Fax: 07 4955 2183

Maroochydore OneSteel Reinforcing
517 Maroochydore Rd, Kunda Park QLD 4556
Phone: 07 5445 1561 Fax: 07 5445 1038

Rockhampton OneSteel Reinforcing
88 Hollingsworth Street, North Rockhampton QLD 4701
Phone: 07 4927 9155 Fax: 07 4922 2773

Strathpine OneSteel Reinforcing
8 Duntroon Street, Strathpine QLD 4500
Phone: 07 3205 6766 Fax: 07 3205 4722

Toowoomba OneSteel Reinforcing
Lot 4 Production Court, Toowoomba QLD 4350
Phone: 07 4633 3800 Fax: 07 4633 3690

Townsville OneSteel Reinforcing
399 Bayswater Road, Garbutt QLD 4814
Phone: 07 4775 5100 Fax: 07 4775 1222

South Australia

Adelaide OneSteel Reinforcing
519 Cross Keys Road, Cavan SA 5094
Phone: 08 8349 8666 Fax: 08 8349 7555

Tasmania

Hobart OneSteel Reinforcing
9 Sunmont Street, Derwent Park TAS 7009
Phone: 03 6273 0300 Fax: 03 6273 0315

Launceston OneSteel Reinforcing
36b Murphy Street, Invermay TAS 7248
Phone: 03 6334 3410 Fax: 03 6334 3412

Victoria

Altona North OneSteel Reinforcing
2-22 Kyle Road, Altona North VIC 3025
Phone: 03 9207 2200 Fax: 03 9207 2270

Campbellfield OneSteel Reinforcing
58-60 Killara Road, Campbellfield VIC 3062
Phone: 03 9357 8855 Fax: 03 9357 8292

Dandenong OneSteel Reinforcing
Factory 3/1 Abbots Road, Dandenong VIC 3175
Phone: 03 9706 4321 Fax: 03 9706 4235

Geelong OneSteel Reinforcing
2 Hayworth Court, Breakwater VIC 3219
Phone: 03 5248 3500 Fax: 02 5248 6315

Horsham OneSteel Reinforcing
36 Hamilton Road, Horsham VIC 3400
Phone: 03 5382 3192 Fax: 03 5381 1173

Ringwood OneSteel Reinforcing
Factory 10/505 Maroondah Highway
Ringwood VIC 3134
Phone: 03 9879 5360 Fax: 03 9879 0575

Western Australia

Perth OneSteel Reinforcing
53 Harrison Road, Forestfield WA 6058
Phone: 08 6332 3111 Fax: 08 6332 3149

Head Office

National Office OneSteel Reinforcing
Level 6, 205 Pacific Highway, St Leonards NSW 2065
Phone: 02 8424 9800 Fax: 02 9966 0702



Brochures detailing our Rebar Solutions and range of Accessories, Case Studies, plus CD-ROMs containing software design tools, videos, and all of our technical literature are also available from OneSteel Reinforcing.



www.reinforcing.com

National Office: Level 6, 205 Pacific Hwy, St Leonards NSW 2065 (Locked Bag 3050, Artarmon NSW 1570)
Telephone: (61 2) 8424 9800 Facsimile: (61 2) 9966 0702 Email: reomesh@reinforcing.com

This information is provided as a service to those interested in steel reinforcement. Since the information is provided for general guidance only, and in no way replaces the services of professional consultants on particular projects or subjects, no legal liability can be accepted by OneSteel Reinforcing Pty Limited for its use.
NOT ALL PRODUCTS AVAILABLE IN ALL LOCATIONS. We reserve the right to amend specifications without notice.

500PLUS, 500+, 500PLUS REBAR, TEMPCORE, REIDBAR, BAMTEC, 500PLUS Advanced Design, ONEMESH500, IRONBARK, MINEMESH, UTEMESH500, HANDIMESH and REINVENTING REINFORCING are trademarks authorised for use by OneSteel Reinforcing Pty Limited. ABN 22 004 148 289